

# User guideline

## Boats with the pit by cockpit

Updated 29. June 2020



### Mounting Deckchute on 35'+

**Mounting Deckchute on the boat and loading the spinnaker into Deckchute is best done in harbor.**

**Leaving harbor you are ready for spinnaker action - right away.**



1.



2.



3.

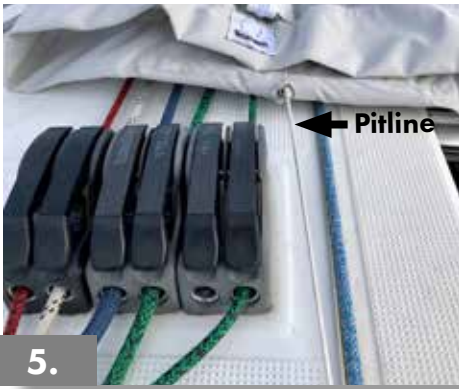


4.

1. Line up the empty Deckchute on the boats port side, pit to foredeck.
2. Turn the frontline in its padeye or loopeye on the foredeck.
3. Take the frontline to a Spinlock/Jammer at the pit. Pull it hard to tie the Deckchute front real hard to its padeye on the foredeck.
4. Alternative: Tie the frontline hard to the mast. Turn it in a loop on itself to tie the Deckchute front real hard to its padeye on the foredeck.

### Downwind ApS

## Mounting Deckchute on 35' +



**5.**  
Tie the pit line to a small pad-eye or to something solid at the pit. Not a lot of load here. Pitend of Deckchute is well in front of port Spinlocks.

**6 and 7.**  
If not already zipped: Zip the spinnaker head to tack.

**8 and 9.**  
Load the spinnaker into Deckchute.  
Open the midline zip. Make sure the spinnaker is not twisted and that it fill the chute well. Place it in big loops going right to the pitend and back.  
Run the dropline through the chute and a Spinlock at the pit.

**10.**  
Close the midline zip.

**11.**  
Tie or softsackel the halyard, sheets and tackline to the spinnaker. Tylaskas or metal sjackles will damage the smooth surface of the Deckchute ring.  
Tackl on ring on tack to avoid that metal hits the Deckchute ring and damage its surface.

**12.**  
The tackline is jumping the pullpit and is turned in the bow or on a bowsprit. The sheets are tied to clew, the dropline is out of pitend of Dechchute and ready to run when the spinnaker is hoisted and taken forward by the tackline.

## Mounting Deckchute on 35' +



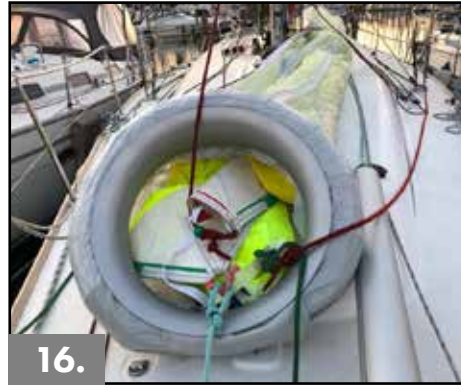
13.



15.



14.



16.

### 13 and 14.

Close Deckchute's second zip. It "shrinks" the chute and compresses the spinnaker inside it. The second zip keeps wind and water out of Deckchute when going upwind.

### 15.

Take halyard back to port side stays and secure it by a sjackel. It is still tied to the head of the spinnaker. This keeps the halyard out of the way of the jib while going upwind, tacking away.

### 16.

The tackline, halyard and the sheets are out of the Deckchute ring.



17.

### 16.

Ready to leave harbor and go upwind:  
White arrow: Deckchute ring is put flat on the deck, the second zip is closed and the halyard is taken back and turned in its sjackel.  
Things to remember before hoisting the spinnaker: Put the Deckchute ring back on its feet, open the second zip, release halyard from its sjackel at port side stays.



18.

### 17.

Ready to leave harbor and hoist the spinnaker right away:  
White arrow: The Deckchute ring is on its feet, the second zip is open, the halyard is hanging free from the mast.